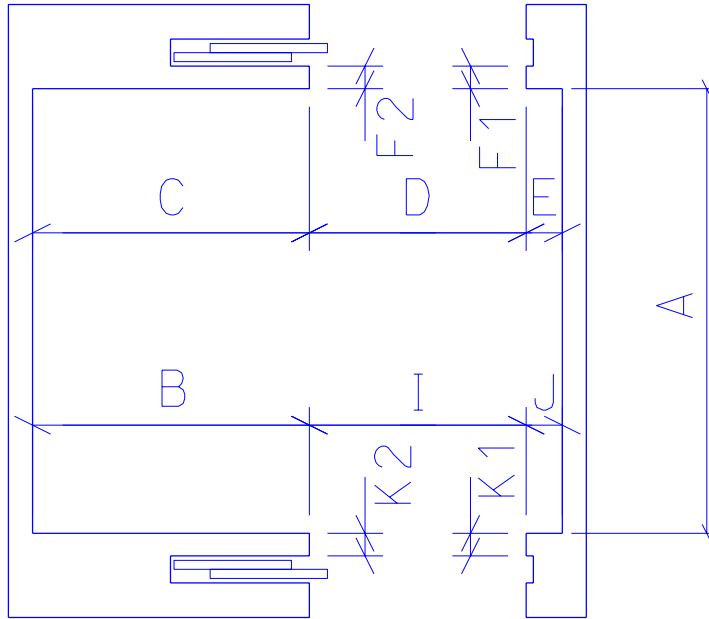


'FRONT ENTRANCE'  
TO LOBBY

CAB LINER  
FRONT AND  
REAR ENTRANCE  
DOOR RIGHT

CRITICAL DIMENSIONS



- A: \_\_\_\_\_
- B: \_\_\_\_\_
- C: \_\_\_\_\_
- D: \_\_\_\_\_
- E: \_\_\_\_\_
- F1: \_\_\_\_\_
- F2: \_\_\_\_\_
- I: \_\_\_\_\_
- J: \_\_\_\_\_
- K1: \_\_\_\_\_
- K2: \_\_\_\_\_

DOOR  
'REAR ENTRANCE'

**DOOR GUARD LLC**

826 PONDEROSA DRIVE  
IMPERIAL, PA 15126  
P(724) 695-8936 F(724)-695-8937  
WWW.DOORGUARDLLC.COM DOORGUARD@WORLDNET.ATT.NET

PROJECT:

ELEVATOR LOCATION:

APPROVED BY:

DATE:

CUSTOMER:

BUILDING ADDRESS

SHEET No: \_\_\_\_\_ of \_\_\_\_\_

# Cab Liner Measuring Instructions

## Measuring Cab Liners

- Be sure to provide all the information required in the legend at the bottom of each template before returning it to Door Guard.
- Record all measurements required. If a dimension is zero, as may be the case for the left side cab wall for a cab with the door located on the left side of the cab.
- Unless requested otherwise, all Cab Liners are designed to a height of 80 inches from the floor. Where hand rails exist, the Cab Liner wall will be placed in front of the hand rail and “spacers” will be provided for the back of the wall for stability when installed.

Fax all measuring templates to 724.695.8937 or mail to :  
Door Guard LLC 826 Ponderosa Drive Imperial, PA 15126

**We strongly urge the person** providing the measurements to Door Guard to call and confer with our staff prior to taking any measurements. It is also helpful for the person taking the measurements to see a copy of our product brochure to better understand the purpose of the measurements he or she is providing. Photos of our products can be seen on our website [www.doorguardllc.com](http://www.doorguardllc.com) on the “Products” page. Please call us at 724.695.8936 or e-mail us at [doorguard@worldnet.att.net](mailto:doorguard@worldnet.att.net) if you have any questions.