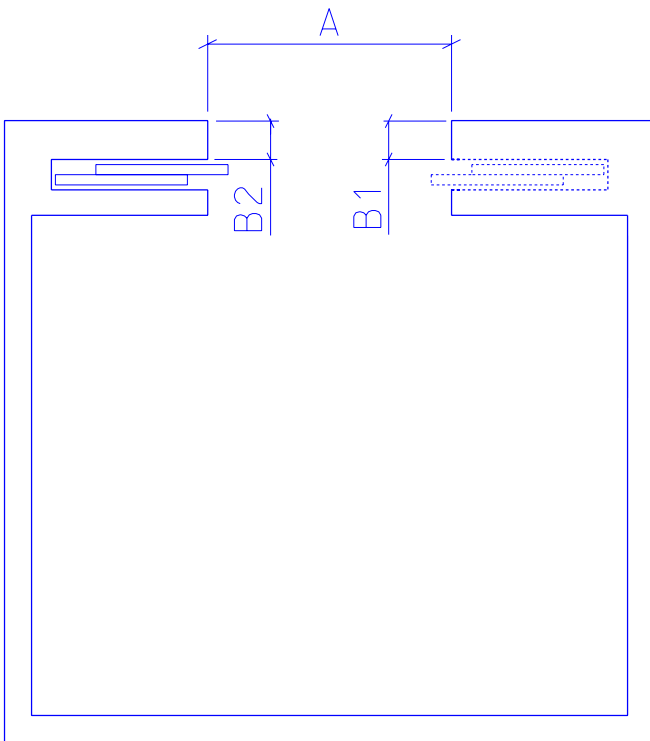


DOOR LINER

CRITICAL DIMENSIONS

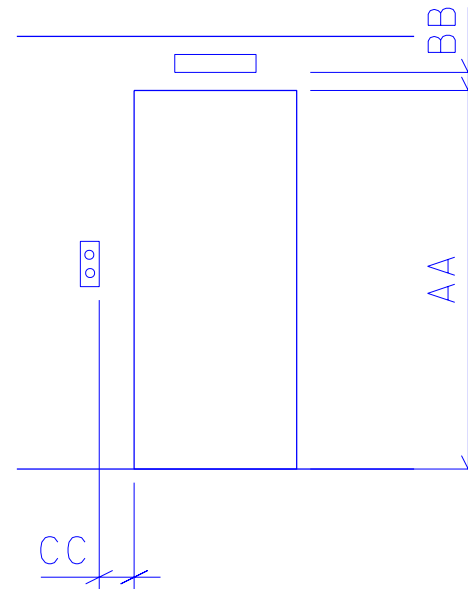
A: _____
 B1: _____
 B2: _____



CAB ENTRANCE

CRITICAL DIMENSIONS

AA: _____
 BB: _____
 CC: _____



IDENTIFY ANY OBJECT,
 IE CALL BUTTONS,
 MOLDING,
 SECURITY CARD
 READERS, ETC.
 WITHIN 4" OF THE
 DOOR JAMB TO
 ELEVATOR
 ENTRY WAY

FRONT ENTRANCE

DOOR GUARD LLC

826 PONDEROSA DRIVE
 IMPERIAL, PA 15126
 P(724) 695-8936 F(724)-695-8937
 WWW.DOORGUARDLLC.COM DOORGUARD@WORLDNET.ATT.NET

PROJECT:

APPROVED BY:

BUILDING ADDRESS

ELEVATOR LOCATION:

DATE:

FLOOR LEVEL:

CUSTOMER:

SHEET No: _____ of _____

Door Liner Measuring Instructions

- Be sure to provide all the information required in the legend at the bottom of each template before returning it to Door Guard.
- When installed, door liners lay flush against the elevator exterior door jamb and header so please note any protrusion from those surfaces protruding more than 1/4 of an inch. Note the position of the protrusion on the appropriate diagram at the bottom of page one.
- You must use a separate Door Liner template and record the requested dimensions for every door liner you will submit for a quote. Many Facility Managers want to protect the elevator entryway on both the loading floor or first floor and the receiving floors. Don't assume an upper floor entry is identical to the first floor or "loading" floor of your building. However, many upper floors in a building are identical. Check several upper floors to be sure there are no "outliers" with a unique configuration.
- Using a digital camera, provide the following photographs for each elevator you submit for a quote. If you submit templates for more than one elevator be sure to identify which photos match with each template. Use the building address, floor number and elevator location found in the template legend.
 - a. Photo of front entryway of each elevator you want Door Guard to quote for door liners. Objective is to help us determine if there are any features such as call buttons, floor indicator lights, security card swipes or floor molding that may interfere with the Door Liner lying flush to the door jamb.
 - b. A photo as described above should be provided for the "loading floor" usually the lobby floor and a typical "receiving floor" or upper floor. Most upper floors have identical or nearly identical configurations that are often different from the lobby floor.

Mail all printed photographs to:

Door Guard LLC 826 Ponderosa Drive Imperial, PA. 15126 Or send JPEG files to: doorguard@worldnet.att.net. Be sure to note in your email the address of the corresponding building of the accompanying template so we may match the photo to the correct building.

Fax all measuring templates to 724.695.8937 or mail to :

Door Guard LLC 826 Ponderosa Drive Imperial, PA 15126

We strongly urge the person providing the measurements to Door Guard to call and confer with our staff prior to taking any measurements. It is also helpful for the person taking the measurements to see a copy of our product brochure to better understand the purpose of the measurements he or she is providing. Photos of our products can be seen on our website www.doorguardllc.com on the "Products" page. Please call us at 724.695.8936 or e-mail us at doorguard@worldnet.att.net.